



FIVEFINGERS





# OUR FOUNDATION

The strength of the human foot lies in its structural capability of playing different roles: bearing weight, adapting to uneven surfaces, and maintaining vertical stability; it changes from an effective shock absorber for impact to a powerful propulsion source.

These actions require rapid and refined muscle responses. Thousands of receptors and billions of signals arising from them towards the spinal cord and the brain make the foot an amazing sensory and motor organ, allowing the fastest muscle responses based on proprioceptive reflexes.

The mission of Vibram Fivefingers is to engineer essential protective footwear, always aiming at allowing the human foot to move naturally and uncompromised.

**We are what we do. Let your feet move naturally.**







A close-up photograph of a person's foot wearing a black Vibram FiveFingers shoe, standing on a mossy rock in a forest. The shoe has yellow accents on the side and a yellow pull tab at the heel. The background is a blurred forest scene with trees and foliage.

# OUR PRODUCT

Vibram FiveFingers is a protective tool and “articulated” rubber sole in the shape of the human foot. The glove-like upper respects the natural functionality of the foot, allowing you to feel the ground naturally with a level of protection\*.

2024: the next level of naturally “articulated” footwear.



# LINE LIST

MAXIMAL, MEDIUM, AND MODERATE GROUND FEEL PRODUCTS

## MAXIMAL GROUND FEEL

**Sole thickness:** 2,50 to 4,50 mm

Our thinnest soles, designed to provide maximum articulation and ground feel combined with essential protection.

## MEDIUM GROUND FEEL

**Sole thickness:** From 4, 60 to 5,90 mm

Medium-thickness soles, designed to provide high articulation and ground feel combined with essential protection.

## MODERATE GROUND FEEL

**Sole thickness:** From 6,00 to 12,00mm

Our thickest soles, which are still minimal when compared to traditional shoes. They provide excellent articulation and ground feel combined with comfortable protection.

**Caution:** as used in this catalogue, “protection” means only a rubber barrier between ground and the foot. Vibram FiveFingers® are not orthopedic or safety footwear and should not be used as such or for playing active sport activities involving significant stress for feet and lower limbs.



## GROUND FEEL LEVEL

	<b>MAXIMAL GROUND FEEL</b> Sole thickness: 2,50 to 4,50 mm	<b>MEDIUM GROUND FEEL</b> Sole thickness: From 4,60 to 5,90 mm	<b>MODERATE GROUND FEEL</b> Sole thickness: From 6,00 to 12,00 mm
TRAINING		V-SOUL    KSO EVO    EL-X KNIT  ALITZA LOOP 	V-TRAIN 2.0    KMD EVO  V-RUN 
OUTDOOR		V-ALPHA    V-TRAIL 2.0 	SPYRIDON EVO    V-TREK    V-TREK INS. 
WATER		V-AQUA 	
LIFESTYLE	KSO ECO    VI-B ECO 	V-KUMO 	V-LYNX    CVT-LEATHER    V-NEOP 
ORIGINALS	CLASSIC ECO 	KSO VINTAGE 	
PERFORMANCE SOCKS	ATHLETIC NO SHOW 	WOOL BLEND CREW 	GHOST 

# YOUR PLAYGROUNDS OUR TECHNOLOGY



## ECOSTEP RECYCLE

In 1994, Vibram introduced Vibram ECOSTEP, an eco-friendly compound ideal for light outdoor and casual footwear soles. This innovative solution reduces waste and new material usage by up to 30%, maintaining Vibram's high-quality standards. ECOSTEP stands as a global benchmark for recycled rubber in shoe soles.

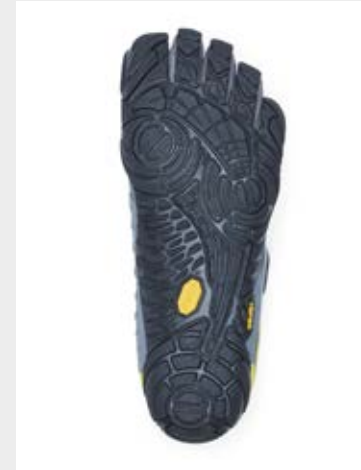
**MODEL FT. SOLE:**  
KMD EVO - V-KUMO



## ECOSTEP NATURAL

Vibram ECOSTEP Natural is a rubber compound constructed from more than 90% natural ingredients, while maintaining the same Vibram standard of quality, grip and performance. Ecostep Natural offers the same grip and durability found with other Vibram compounds, allowing for superior traction on urban surfaces.

**MODEL FT. SOLE:**  
KSO ECO, Vi-B ECO,  
Classic ECO



## XS TREK

Vibram XS TREK is a technical compound that allows great overall performance qualities, in particular flexibility and wet traction. Highly responsive to the various demands of life, XS TREK will carry you from the trail to the urban playground and even to the indoor activities, thanks to its non-marking feature.

**MODEL FT. SOLE:**  
CVT Leather, V-Train 2.0, KSO Evo,  
V-NEOP, KSO Vintage, EL-X Knit,  
V-Soul, Alitza Loop



## XS RUN

Vibram XS RUN provides a maximal stable hardness across a broad temperature range and the softness of the compound allows for expansive ground contact and grip across lug surfaces. XS RUN also provides high grip on smooth surfaces.

**MODEL FT. SOLE:**  
V-Run







## MONT

Vibram MONT compound formulation is optimized for mountaineering, trekking, acrobatic, works, and motorbike racing. MONT is used to conquer the highest reliability on the most difficult terrains at low temperatures.

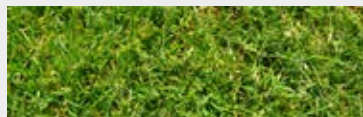
**MODEL FT. SOLE:**  
V-Run



## VI-LITE

Vibram VI-LITE features the ultimate in lightweight, shock, absorption cushioning, for maximum energy conservation.

**MODEL FT. SOLE:**  
V-Run, CVT Leather



## MEGAGRIP

Vibram MEGAGRIP offers excellent grip properties on both dry and wet terrains while maintaining a high level of durability. Developed for the user who frequently encounters slippery surfaces, MEGAGRIP offers an incomparable combination of grip and durability.

**MODEL FT. SOLE:**  
V-Trek, V-Aqua, V-Trail 2.0, V-Alpha, Spyridon EVO, V-Lynx



## MEGAGRIP 3D COCOON

3D COCOON embedded in the outsole, this thin and flexible mesh disperses ground pressure by distributing impact. Flexible but protective enough to traverse safely over uneven ground, the user experiences ground feedback with less bite.

**MODEL FT. SOLE:**  
V-Trail 2.0, Spyridon EVO



## ICETREK

Vibram ICETREK provides unparalleled grip on cold, icy, or snow covered surfaces. The soft rubber compound in combination with uniquely designed lugs allows ICETREK soles to move swiftly on various icy surfaces.

**MODEL FT. SOLE:**  
V-Trek Insulated





# TRAINING

Maximum proprioception  
for optimal human performance.





# V-SOUL

FEMININE INDOOR FITNESS

Open, light and flexible. Adjustable, secure fit.  
Maximum articulation and ground feel.

Total sole thickness: 5mm

This style is part of our Medium Ground Feel  
product philosophy.

-

## USAGE

Functional fitness, Pilates, yoga, etc.

## WEIGHT

W38= 3,2oz / 91gr

## CARE INSTRUCTION

Machine Wash Cold / Air Dry



2 mm PU foam  
insole + Poly  
sockliner



Shiny Polyester  
material

Hook & loop  
closure



3 mm  
rubber outsole  
compound:

**XS TREK**





## Women's



**18W7201**  
Black



**18W7202**  
Silver / Light Grey

# ALITZA LOOP

An ideal minimalist shoe for fitness classes, barre and studio sessions, the Alitza Loop is light, breathable and follows your every move.

- Secure microfiber loops
- Stretch gore for adjustable fit
- Easy on/off makes for an effortless transition

Total thickness of sole: 5mm

This style is part of our Medium Ground Feel product philosophy.

-

## USAGE

Functional fitness, Pilates, yoga, etc.

## WEIGHT

W38= 2,99oz / 85gr

## CARE INSTRUCTION

Machine Wash Cold / Air Dry

2 mm EVA foam insole + Anti-microbial Drilex Sockliner

Stretch polyamid upper



Secure microfiber loops

3 mm rubber outsole compound:

**XS TREK**





## Women's



**15W4801**  
Black



**23W4803**  
Beige

# KSO EVO

THE UNIVERSAL, MINIMAL  
TRAINING TOOL

Maximum articulation and ground feel.  
Assured grip and essential protection\*.  
Light, airy and simple adjustable upper design.

Total thickness of sole: 5mm

This style is part of our Medium Ground Feel  
product philosophy.

## USAGE

Functional fitness, primal movements, balance and  
strengthening workouts

## WEIGHT

W38= 3,5oz / 99gr  
M43= 4,9oz / 139gr

## CARE INSTRUCTION

Machine Wash Cold / Air Dry



**XS TREK**





## Women's



**14W0701**  
Black

---



**18W0701**  
Black / Rose

---

## Men's



**14M0701**  
Black

---



**18M0701**  
Black / Red

# EL-X KNIT

THE SOFT, COMFORTABLE  
SLIP-ON SOLUTION

The knitted upper of the EL-X Knit truly fits around the foot like a glove, while the super minimalist XS Trek outsole provides excellent ground feel with an optimal balance of traction and durability. Now in men's and women's versions.

Total thickness of sole: 5mm

This style is part of our Medium Ground Feel product philosophy.

-

## USAGE

Casual, travel, and fitness

## WEIGHT

W38 = 3,88oz / 110gr  
M43 = 4.94oz / 140gr

## CARE INSTRUCTION

Machine Wash Cold / Air Dry



3 mm  
rubber outsole  
compound:  
**XS TREK**





## Women's



**23W8601**  
Black



**23W8602**  
Grey

## Men's



**23M8601**  
Black



**23M8602**  
Grey

# V-TRAIN 2.0

## THE PERFECT TOOL FOR SERIOUS TRAINERS AND FUNCTIONAL ATHLETES

Good level of ground feel and protection with good toe articulation for great balance and active stability.

Upper construction specifically designed for heavy training, focused on durability and performance. Distinctive rope traction lugs in the arch.

Updated panel lacing system with a Hook+Loop closure system, with new softer feel. Perfect for aggressive, lateral movements.

XS Trek rubber compound for all around performance both indoor and outdoor.

Total thickness of sole: 6mm

This style is part of our Moderate Ground Feel product philosophy.

-

### USAGE

Functional fitness, balance and strength workouts, plyometrics, powerlifting, and some running.

### WEIGHT

W38= 6,2oz / 177gr  
M43= 7,8oz / 220gr

### CARE INSTRUCTION

Machine Wash Cold / Air Dry



Polyester fabric

Rope  
Traction lugs

Lacing +  
hook & loop  
closure

2 mm EVA  
insole +  
Polyester  
sockliner

Lateral TPU  
panels

4 mm  
rubber outsole  
compound:

**XS TREK**



## Women's



**20W7701**  
Black / Black



**20W7703**  
Black / Pink



**21W7702**  
Grey / Camo

## Men's



**20M7701**  
Black / Black



**20M7703**  
Black / Blue



**21M7702**  
Grey / Camo



# V-RUN

## THE NATURAL ROAD RUNNING AND FITNESS TOOL

Exceptionally lightweight and flexible.

Features a 4mm Vi-Lite midsole for an additional level of light cushioning.

Appropriate for transitioning from traditional to minimalrunning footwear.

Great for sprint training, even for those who run longer distances in more cushioned trainers.

Soft polyamide upper featuring strategically placed perforations for superior fit, breathability and comfort.

Total thickness of sole: 8,5mm

This style is part of our Moderate Ground Feel product philosophy.

-

### USAGE

Road running, treadmill running, general fitness.

### WEIGHT

W38= 3,74oz / 106gr

M43= 4,8oz / 136gr

### CARE INSTRUCTION

Machine Wash Cold / Air Dry

Perforations  
for ventilation

2 mm EVA insole  
+ Dri-Lex®  
sockliner

4 mm midsole  
compound:

**VI-LITE**

Extra soft  
Polyester fabric

2.5 mm  
rubber pieces  
compound:

**XS RUN**

2.5 mm rubber  
pieces / durable  
compound:

**MONT**





## Women's



**16W3105**  
Black / Yellow / Purple



**23W7003**  
Lime / Blue

## Men's



**16M3101**  
Black / Yellow



**23M7002**  
Gold / Yellow / Black

# KMD EVO

## EXTRAORDINARY FREEDOM FOR DYNAMIC MOVEMENT

KMD Evo is a fan-favourite for a reason.

It features a 2mm EVA insole and a 6mm midsole, powered by a 4mm grippy Vibram Ecostep Recycle outsole made with a minimum of 30% recycled Vibram rubber and a soft, breathable, knitted upper with a quick-lacing system.

Lightweight and comfortable, KMD Evo performs well for a traditional indoor & outdoor training activities, such as fitness classes, weight lifting, cardio and other gym exercises

Total thickness of sole: 12mm

This style is part of our Moderate Ground Feel product philosophy.

-

### USAGE

Gym, functional fitness, plyometrics, light parkour, balance and strengthening workouts.

### WEIGHT

W38= 5,64oz / 160gr

M43= 7,4oz / 210gr

### CARE INSTRUCTION

Machine Wash Cold / Air Dry

Dual  
hook-and-loop  
closure system



Knit polyester  
upper for  
comfort and  
breathability



2mm EVA +  
Anti-Microbial  
Drilex  
Sockliner

EVA midsole  
thickness: 6mm

4mm  
rubber outsole  
compound:

**ECOSTEP RECYCLE**





## Women's



**24W4001**  
Black



**24W4003**  
Black / Lilac

## Men's



**24M4001**  
Black



**24M4002**  
Warm Taupe / sage



# OUTDOOR

Our natural playground.







# V-ALPHA

## ESSENTIAL, MINIMAL OUTDOOR

100% true to our original philosophy: a protective\* tool for the foot that allows ground sensory, performance and dexterity. Offering essential protection\* for unpredictable outdoor conditions.

Flexible 3.7mm rubber outsole featuring our Megagrip compound, assuring grip and durability in both dry and wet conditions.

2mm PU foam insole for maximal comfort.

360° foot covering with newly developed upper material. 50/50 blend of wool and synthetics improves foot climate and reduces odor. Synthetic fibers provide mechanical strength and durability. Designed for function, with no nonsense.

Total thickness of sole: 5,7mm

This style is part of our Medium Ground Feel product philosophy.

-

### USAGE

Outdoor training, walking, exploring, trekking, fitness.

### WEIGHT

W38= 3,65oz / 103gr

M43= 4,8oz / 136gr

### CARE INSTRUCTION

Machine Wash Cold / Air Dry



2 mm PU foam insole + Wool / Poly sockliner



PU film protection and reinforcement



Multidirectional lug design

50% Wool / 50% Polyester material all around the foot

3.7 mm rubber outsole compound:

**MEGAGRIP**



## Women's



**18W7101**  
Black



**24W7103**  
Lilac / Warm Taupe

## Men's



**18M7101**  
Black



**24M7102**  
Warm Taupe

# V-TREK

TOOL FOR WALKING, HIKING  
AND TREKKING

Flexible 4mm rubber outsole featuring the Megagrip rubber compound - our premium outdoor formula for ultimate grip in both dry and wet conditions.

4mm PU midsole adds a touch of cushion for all movements. 360° foot covering with newly developed upper material.

50/50 blend of wool and synthetics improves foot climate and reduces odor. Synthetic fibers provide mechanical strength and durability.

Total thickness of sole: 8mm

This style is part of our Moderate Ground Feel product philosophy.

-

## USAGE

Hiking, trekking, and traveling. The outdoor essential.

**Great also for casual wear**

## WEIGHT

W38= 4,9oz / 139gr

M43= 6,5oz / 185gr

## CARE INSTRUCTION

Machine Wash Cold / Air Dry



50% Wool / 50% Polyester material all around the foot

50% WOOL / 50% Polyester sockliner

4 mm Soft Polyurethane insole

4 mm rubber outsole compound:

**MEGAGRIP**





## Women's



**19W7401**  
Black / Black



**18W7402**  
Military / Purple

## Men's



**19M7401**  
Black / Black



**18M7402**  
Military / Dark Grey

# V-TREK INSULATED

TOOL FOR WALKING, HIKING AND  
TREKKING, OFFERING INSULATION  
FOR WARMTH

Resistant Nylon Shell with Fleece Lined Collar,  
Tongue & Quarter Panels.

Brushed Toe fabric for easy flexibility and  
enhanced comfort compared to older models.

Toe film protection on top of and between toes.

Hypatex overlay braces for non-absorbent water  
shedding.

Total thickness of sole: 8mm

This style is part of our Moderate Ground Feel  
product philosophy.

-

## USAGE

Hiking, trekking, and traveling when additional  
foot warmth is necessary.

**Great also for casual wear**

## WEIGHT

W38= 6,2oz / 176gr

M43= 7,8oz / 221gr

## CARE INSTRUCTION

Machine Wash Cold / Air Dry



Polyester fleece  
lining 3/4  
construction



Resistant  
Nylon Shell

Insulation layer  
inside



4 mm Soft  
Polyurethane  
insole

4 mm  
rubber outsole  
compound:

**ICETREK**





## Women's



**20W7801**  
Black



**20W7803**  
Military / Grey

## Men's



**20M7801**  
Black



**20M7803**  
Military / Black



# V-TRAIL 2.0

YOUR ESSENTIAL TOOL FOR OUTDOOR  
RUNNING PERFORMANCE

3D Cocoon mesh offers protection from sharper objects during outdoor training, like rocks or acorns. This tridimensional nylon mesh is molded into the rubber sole - 3D Cocoon disperses the point of impact of hard and sharp objects. Continues to offer excellent proprioception and dexterity.

Megagrip rubber compound offers supreme grip in both wet and dry conditions.

Total thickness of sole: 5,7mm

This style is part of our Medium Ground Feel product philosophy.

-

## USAGE

Ideal for running in nature, on trails or during obstacle races - the ultimate tool for moving on unpredictable surfaces.

## WEIGHT

W38= 5,0oz / 142gr

M43= 6,4oz / 182gr

## CARE INSTRUCTION

Machine Wash Cold / Air Dry





## Women's



**19W7601**  
Black / Yellow



**23W7604**  
Pompeian Red / Black

## Men's



**19M7601**  
Black / Yellow



**23M7604**  
Pompeian Red / Black

# SPYRIDON EVO

THE TECHNICAL, OFF-ROAD TRAIL TOOL

Designed to perform on muddy and uneven trails, the Spyridon EVO is the ideal shoe for adventurous runners. It boasts a 3,7mm Vibram Megagrip outsole for excellent grip, plus a 3mm PU foam insole for comfort. The addition of 3D Cocoon mesh disperses the point of impact of rocks, roots, acorns and other hard, sharp objects.

Total thickness of sole: 6,7mm

This style is part of our Moderate Ground Feel product philosophy.

-

## USAGE

Trail running, obstacle courses, unpredictable surfaces

## WEIGHT

W38 = 8,4oz / 238,14gr

M43 = 10,9oz / 309gr

## CARE INSTRUCTION

Machine Wash Cold / Air Dry



3D COCOON  
technology  
inside  
**3D COCOON**

3.7 mm rubber  
outsole  
compound:  
**MEGAGRIP**





## Women's



**22W5501**  
Black / Black

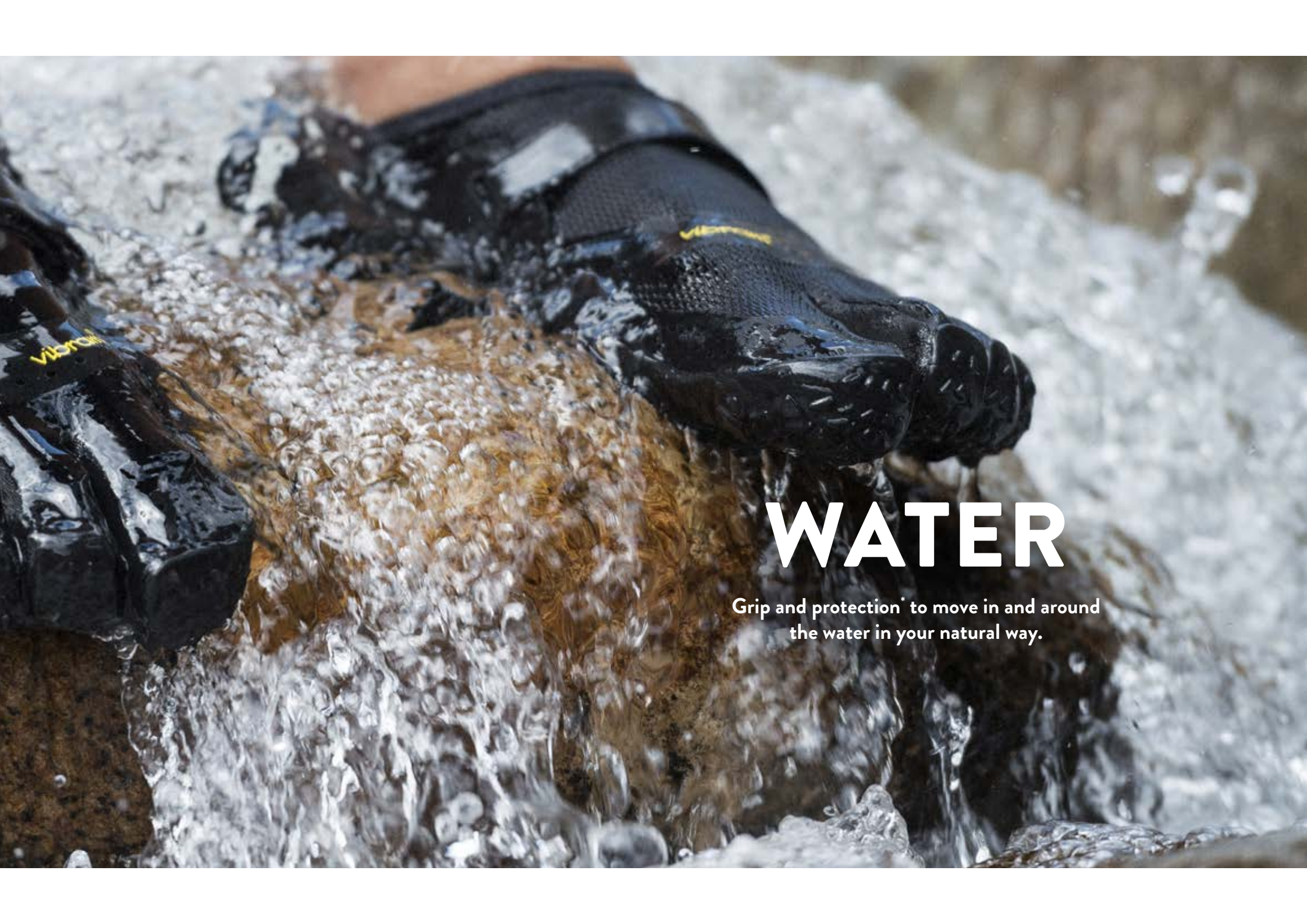
## Men's



**22M5501**  
Black / Black







# WATER

Grip and protection\* to move in and around  
the water in your natural way.



# V-AQUA

## THE AMPHIBIOUS TOOL

Same minimalistic outsole as V-Alpha: 3mm Megagrip compound. Light, thin, and flexible tool, offering essential protection. Allows natural foot movement and offers protection for water activity, when going barefoot is not an option.

2mm EVA insole with 2mm perforations through each sole, allowing water to move through the shoe and dry quickly. Snug fit and fast drying synthetic mesh upper, adjustable by two Velcro straps.

Distinctive silicone print in the lining increases friction between the skin and shoe, allowing for a more secure fit when water would usually encourage slipping.

Total thickness of sole: 5,7mm

This style is part of our Medium Ground Feel product philosophy.

-

### USAGE

Grip and protection in and around the water for movement on wet rocks, in riverbeds, in canoes, kayaks, and SUP. Excellent for swimming and even triathlon race transitions. Successor to the Signa.

### WEIGHT

W38= 3,95oz / 112gr

M43= 4,9oz / 138gr

### CARE INSTRUCTION

Machine Wash Cold / Air Dry





## Women's



**18W7301**  
Black



**18W7303**  
Light Grey / Blue

## Men's



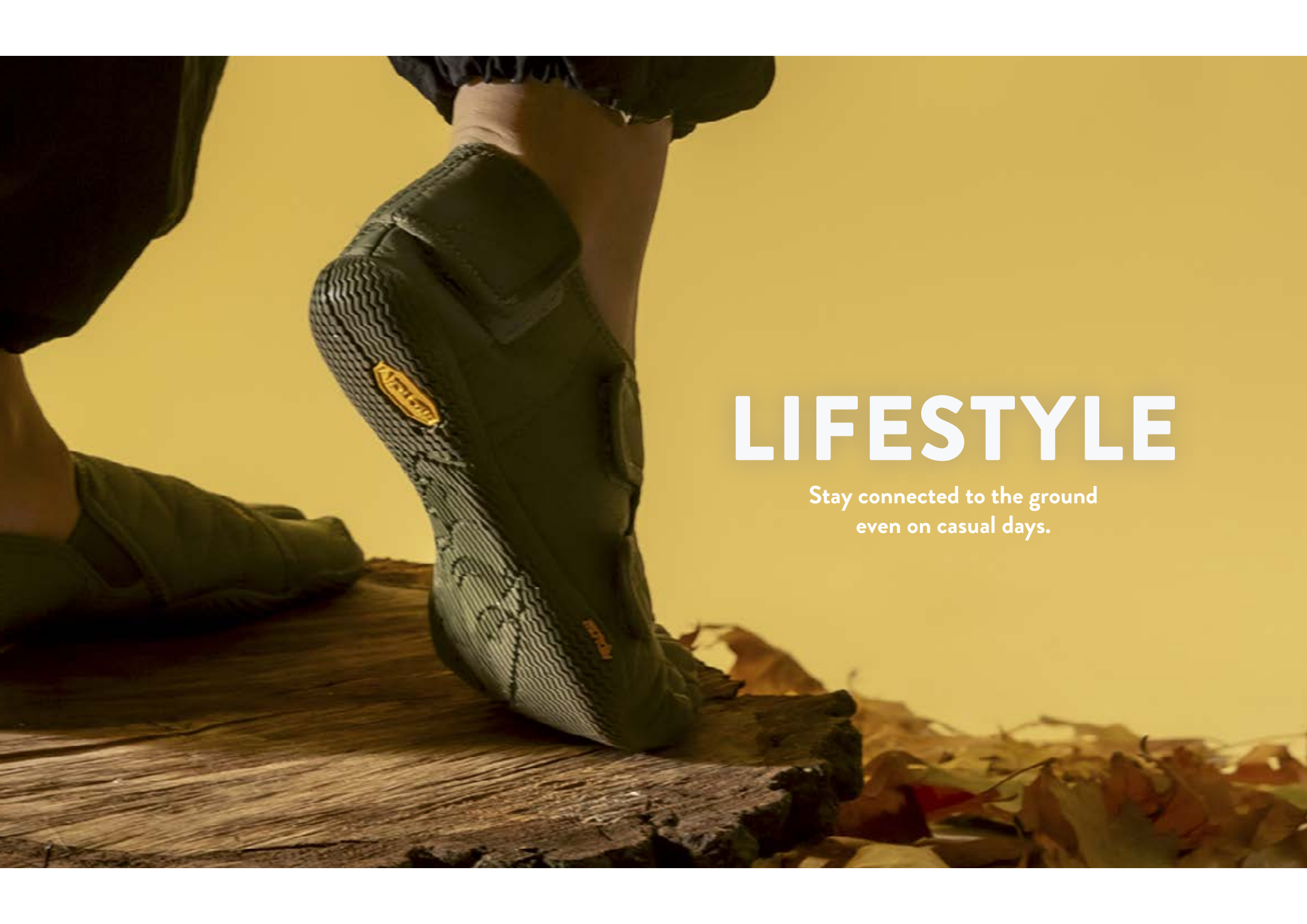
**18M7301**  
Black



**18M7303**  
Light Grey







# LIFESTYLE

Stay connected to the ground  
even on casual days.

# V-KUMO

## WOMEN'S CASUAL WEAR

This casual, everyday shoe is stylish, comfortable and provides maximum ground feel.

The outsole features the Ecostep Recycle compound made with a minimum of 30% recycled Vibram rubber, an innovative solution that reduces waste while maintaining Vibram's high-quality standards. The flexible sole design is defined by a modified herringbone pattern exemplified by hundreds of traction elements.

The quilted lightweight synthetic upper feels great on the foot and secures snugly with a three point hook and loop closure system for easy on and off.

Ideal for transitional season mild weather, for everyday activities such as running errands in the city or spending time in the outdoors with friends.

Total thickness of sole: 5mm

This style is part of our Medium Ground Feel product philosophy.

### USAGE

Casual, travel

### WEIGHT

W38= 7,4oz / 210gr

### CARE INSTRUCTION

Hand Wash Cold / Air Dry



**ECOSTEP RECYCLE**



## Women's



**24W1501**  
Black



**24W1502**  
Loden Green



# V-LYNX

## AUTUMN AND WINTER EVERYDAY WEAR

This NEW model is powered by a soft polyurethane 4mm insole and a flexible 4mm Vibram rubber outsole featuring the Megagrip rubber compound, our premium outdoor formula that offers excellent grip properties on both dry and wet conditions while maintaining a high level of durability. A water repellent and padded upper keeps your feet warm on drizzly days, while the thermowelded zipper improves insulation. Perfect for autumn-winter everyday wear.

Total thickness of sole: 8 mm

This style is part of our Moderate Ground Feel product philosophy.

### USAGE

Casual, water and travel

### WEIGHT

W38= 11,29oz / 320gr  
M43= 14,83oz / 420gr

### CARE INSTRUCTION

Hand Wash Cold / Air Dry





## Women's



**24W5306**  
Black



**24W5307**  
Blue



**24W5308**  
Silver Pine

## Men's



**24M5306**  
Black



**24M5307**  
Blue



**24M5308**  
Silver Pine

# V-NEOP

CASUAL, FUNCTIONAL  
NEOPRENE SOLUTION

This casual minimalist shoe features a comfortable, functional neoprene upper and a grippy Vibram outsole that excels in the city and in and around waters.

Total thickness of sole: 6,5mm

This style is part of our Moderate Ground Feel product philosophy.

-

## USAGE

Casual, water and travel

## WEIGHT

W38= 5,0oz / 142gr

M43= 6,5oz / 184gr

## CARE INSTRUCTION

Machine Wash Cold / Air Dry







## Women's



**23W9602**  
Black / Black

## Men's



**23M9602**  
Black / Black

# KSO ECO

THE NATURAL,  
ECO-CONSCIOUS SOLUTION

This casual minimalist shoe features a soft hemp upper paired with a Ecostep Natural outsole, which is made with more than 90% natural ingredients.

Total thickness of sole: 3mm

This style is part of our Maximal Ground Feel product philosophy.

-

## USAGE

Casual, travel

## WEIGHT

W38= 3,5oz / 99gr

M43= 4,9oz / 139gr

## CARE INSTRUCTION

Machine Wash Cold / Air Dry

Fast lacing



Hemp Mesh  
material

3 mm  
rubber outsole  
compound:  
**ECOSTEP  
NATURAL**





## Women's



**21W9501**  
Grey



**21W9503**  
Beige

## Men's



**21M9501**  
Grey



**21M9502**  
Military Green



# CVT-LEATHER

THE NATURAL DAILY SOLUTION

This casual minimalist shoe provides nature lovers a breathable, sustainable slip-on convertible shoe with a true barefoot feel.

Total thickness of sole: 8,5mm

This style is part of our Moderate Ground Feel product philosophy.

-

## USAGE

Casual and travel

## WEIGHT

W38= 2,78oz / 79gr

M43= 3,45oz / 98gr

## CARE INSTRUCTION

Hand Wash Cold / Air Dry





## Women's



**20W7901**  
Leather Black



**23W7902**  
Leather Brown

## Men's



**20M7901**  
Leather Black



**23M7902**  
Leather Brown



# VI-B ECO

THE COMFORTABLE, ECO-CONSCIOUS  
SLIP-ON SOLUTION

Cute, comfortable and stylish, our popular ballet flat now features an eco-friendly hemp upper paired with a flexible, durable Ecostep Natural sole.

Total thickness of sole: 3mm

This style is part of our Maximal Ground Feel product philosophy.

-

## USAGE

Casual and travel

## WEIGHT

W38 = 3,17oz / 89,87gr

## CARE INSTRUCTION

Machine Wash Cold / Air Dry



3 mm  
rubber outsole  
compound:  
**ECOSTEP  
NATURAL**



## Women's



**23W8701**  
Grey / Black



**23W8702**  
Burgundy



**23W8703**  
Silver / Grey





# ORIGINALS

How we started this journey - ride on!







# CLASSIC ECO

THE CLASSIC ECO-CONSCIOUS  
SOLUTION

Our Classic FiveFingers now has an eco-friendly upgrade. Featuring an EcoStep Natural outsole, this popular shoe fits and feels as great as ever.

Total thickness of sole: 4,5mm

This style is part of our Maximal Ground Feel product philosophy.

-

## USAGE

Walking and casual

## WEIGHT

W38 = 4,59oz / 130.12gr

M43 = 5,64oz / 159.89gr

## CARE INSTRUCTION

Machine Wash Cold / Air Dry





## Women's



**23W8501**  
Grey/Black

## Men's



**23M8501**  
Grey/Black



# KSO VINTAGE

CASUAL, VERSATILE, DAILY SOLUTION

This casual, comfortable shoe features a thin, breathable upper material with a single strap hook-and-loop closure system designed to keep stuff out.

Total thickness of sole: 5,5mm

This style is part of our Maximal Ground Feel product philosophy.

-

## USAGE

Casual, gym, travel

## WEIGHT

W38= 4,67oz / 132gr

M43= 6,15oz / 174gr

## CARE INSTRUCTION

Machine Wash Cold / Air Dry



**XS TREK**



## Women's



**23W1401**  
Military Green



**W148**  
Black

## Men's



**23M1401**  
Military Green



**M148**  
Black



# PERFORMANCE SOCKS

The toes socks series is designed to be used with toe shoes and standard shoes. It is engineered to provide comfort for toes and controls moisture.

## Athletic No Show

- Arch compression
- Flexible toes
- Midweight

### Tech Specs

#### MATERIAL

Coolmax®  200 N Knitting + Tight Fit

#### COMPOSITION

76% Coolmax® 21% Nylon 3% Lycra

Wash / Do Not Bleach / Do Not Iron / Do Not Dry Clean

## Outdoor Low Crew

- Arch compression
- Flexible toes
- Midweight

### Tech Specs

#### MATERIAL

Merino Wool + 200 N Knitting + Tight Fit

#### COMPOSITION

69% Merino Wool 28% Nylon 3% Lycra Machine


Wash / Do Not Bleach / Do Not Iron / Do Not Dry Clean

## Ghost

- Stretch construction
- Flexible toes
- Extra thin

### Tech Specs

#### MATERIAL

Coolmax®  200 N Knitting + Tight Fit

#### COMPOSITION

80% Coolmax® 18% Nylon 2% Lycra

Wash / Do Not Bleach / Do Not Iron / Do Not Dry Clean

SIZING					
		S	M	L	XL
EU		34-37	38-41	42-45	46+
US	men	up to 5	6-8	8.5-11.5	12+
	women	up to 8.5	7.5-9.5	10-13	13.5+

## Athletic No Show



Athletic No Show  
S: S15N01S M: S15N01M  
L: S15N01L XL: S15N01XL



Athletic No Show  
S: S15N02S M: S15N02M  
L: S15N02L XL: S15N02XL



Athletic No Show  
S: S15N03S M: S15N03M  
L: S15N03L XL: S15N03XL



Athletic No Show  
S: S18N01S M: S18N01M  
L: S18N01L XL: S18N01XL



Athletic No Show  
S: S18N02S M: S18N02M  
L: S18N02L XL: S18N02XL



Athletic No Show  
S: S18N03S M: S18N03M  
L: S18N03



Athletic No Show  
S: S18N04S M: S18N04M  
L: S18N04L XL: S18N04XL



Athletic Pro No Show  
S: S21N02S M: S21N02M  
L: S21N02L XL: S21N02XL



Athletic Pro No Show  
S: S21N03S M: S21N03M  
L: S21N03L XL: S21N03XL



Athletic Pro No Show  
S: S21N04S M: S21N04M  
L: S21N04L XL: S21N04XL



Athletic Pro No Show  
S: S21N05S M: S21N05M  
L: S21N05L XL: S21N05XL



Athletic No Show - 2 Pack  
S: S15N12PS M: S15N12PM  
L: S15N12PL XL: S15N12PXL



Athletic No Show - 2 Pack  
S: S15N23PS M: S15N23PM  
L: S15N23PL XL: S15N23PXL



Athletic Pro No Show - 2 Pack  
S: S21N24PS M: S21N24PM  
L: S21N24PL XL: S21N24PXL



Athletic Pro No Show - 2 Pack  
S: S21N35PS M: S21N35PM  
L: S21N35PL XL: S21N35PXL

## Outdoor Low Crew



Wool-Blend Crew  
S: S15C01S M: S15C01M  
L: S15C01L XL: S15C01XL



Wool-Blend Crew  
S: S18C01S M: S18C01M  
L: S18C01L XL: S18C01XL



Wool-Blend Crew - 2 Pack  
S: S15C12PS M: S15C12PM  
L: S15C12PL XL: S15C12PXL



Ghost  
S: S15G01S M: S15G01M  
L: S15G01L XL: S15G01XL



Ghost  
S: S15G02S M: S15G02M  
L: S15G02L XL: S15G02XL



Ghost - 2 Pack  
S: S15G12PS M: S15G12PM  
L: S15G12PL XL: S15G12PXL







# NOTES

---

---

---

---

---

---

---

---

---

---

---





**Vibram S.p.A.**

Via Colombo 5  
21041 Albizzate  
ITALIA  
Tel: 39 0331999777  
[www.eu.vibram.com](http://www.eu.vibram.com)

**Vibram Connection Lab**

40 Commonwealth Ave,  
Boston, MA 02215  
Tel: 1 857 263-8508  
[www.us.vibram.com](http://www.us.vibram.com)

**Vibram Rubber China**

Fengshen Avenue 257  
Auto City, Xinhua Town  
Haudu, GuangZhou, Guang Dong  
510800, China  
Tel: 0086 2086732333  
[www.vibram.com](http://www.vibram.com)

Most Vibram FiveFingers® are machine washable.

Vibram FiveFingers® designs and utility are patented or patent pending. Vibram S.p.A. has been issued or has pending over 150 patents worldwide protecting our intellectual property.

VIBRAM, the Octagon Logo, the Yellow Octagon Logo, Fivefingers and the FiveFingers Logo are registered trademarks of Vibram S.p.A.